

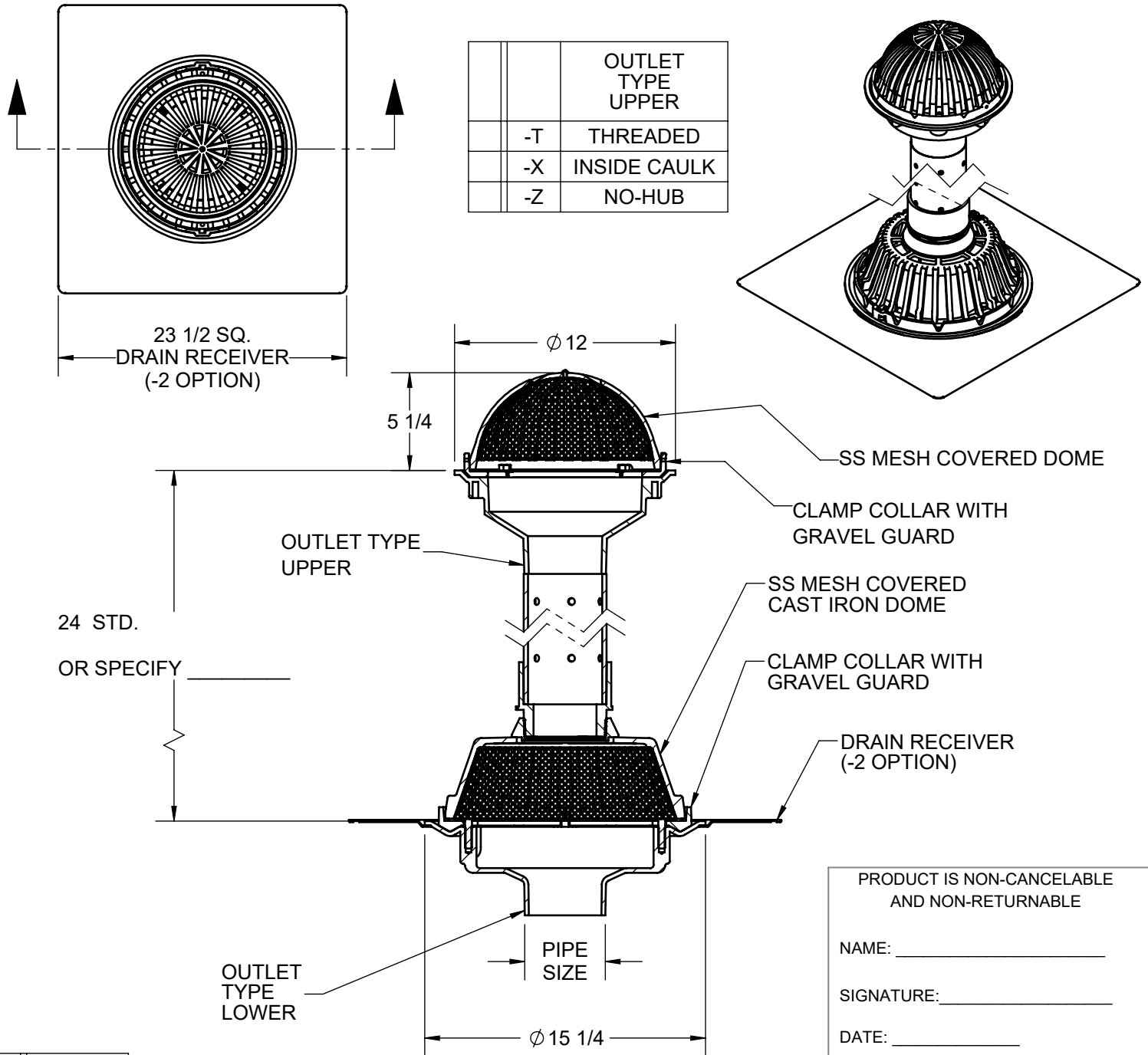
SPECIFICATION:

JOSAM SERIES 21500-Q605 PLAZA/PLANTER DRAIN WITH COATED CAST IRON DRAIN ASSEMBLIES, PERFORATED STANDPIPE AND MESH COVERED DOMES.

SEE 21500 AND 39600 SUBMITTALS FOR MORE DRAIN DETAILS.

**DRAIN
PLAZA/PLANTER**

SERIES **21500-Q605**



PRODUCT IS NON-CANCELABLE AND NON-RETURNABLE

NAME: _____

SIGNATURE: _____

DATE: _____

WARNING: Cancer and Reproductive Harm - www.P65Warnings.ca.gov

PIPE SIZE
2"
3"
4"
5"
6"
8"

		OUTLET TYPE LOWER	
	-T	THREADED	
	-X	INSIDE CAULK	
	-Y	PUSH-ON	
	-Z	NO-HUB	

-1	UNDERDECK CLAMP
-2	DRAIN RECEIVER
-20	GALVANIZED CI PARTS
-VP	VANDAL-PROOF DOME SCREWS
-33	SS SCREEN OVER PIPE
-BRS	BRASS STANDPIPE

DATE OF LAST CHANGE: 11/23/22

DIMENSIONS ARE SUBJECT TO MANUFACTURERS TOLERANCES AND CHANGE WITHOUT NOTICE. WE CAN ASSUME NO RESPONSIBILITY FOR USE OF SUPERSEDED OR VOID DATA.

JOSAM
MICHIGAN CITY, INDIANA

NOTES