

**SPECIFICATION:**

JOSAM 30000-PD-S SERIES GALVANIZED SECURITY FLOOR DRAIN, FLASHING FLANGE THREADED SIDE OUTLET CONNECTION, INTEGRAL TRAP WALL AND NIKALOY ADJUSTABLE SQUARE SUPER-FLO® STRAINER.

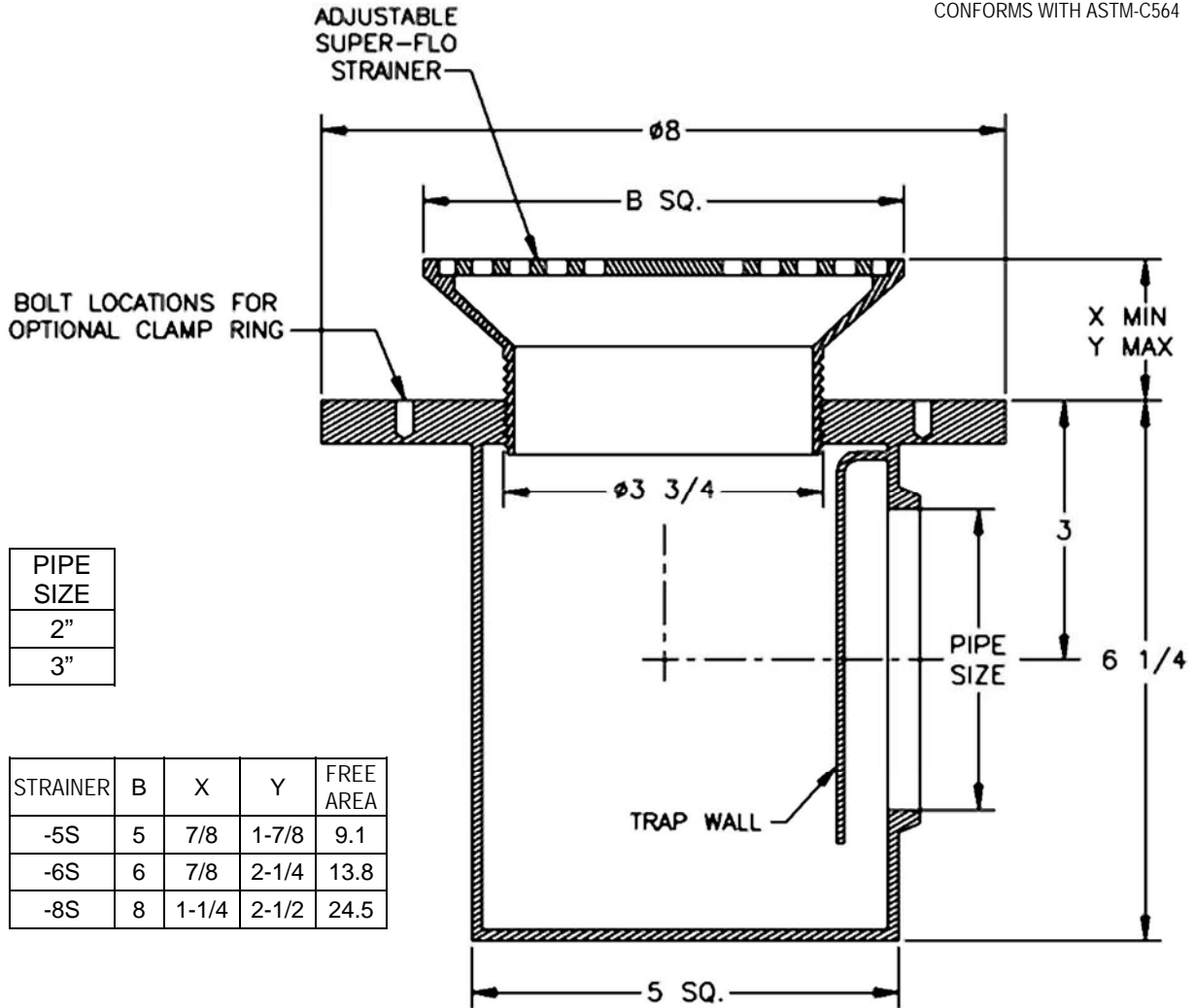
**SECURITY FLOOR DRAIN WITH INTEGRAL TRAP WALL**

**SERIES**

**30000-PD-S**

SLOT WIDTH 1/4"

● GASKET ON -Y CONNECTION CONFORMS WITH ASTM-C564



PIPE SIZE
2"
3"

STRAINER	B	X	Y	FREE AREA
-5S	5	7/8	1-7/8	9.1
-6S	6	7/8	2-1/4	13.8
-8S	8	1-1/4	2-1/2	24.5

- PD PRISON DRAIN
- 50 1/2" PRMER TAP
- C BOLTED FLASHING CLAMP DEVICE
- T THREADED OUTLET
- CP CHROME PLATED STRAINER (5S OR 6S)

- J BACKWATER VALVE
- VP SECURED GRATE, VANDAL-PROOF SCREWS
- 2 BRONZE ADJUSTABLE STRAINER
- 80 PERFORATED STAINLESS STEEL BASKET

DRAWING No. 06/18/08

**A-15609-K**

**JOSAM COMPANY**  
MICHIGAN CITY, INDIANA

NOTES: